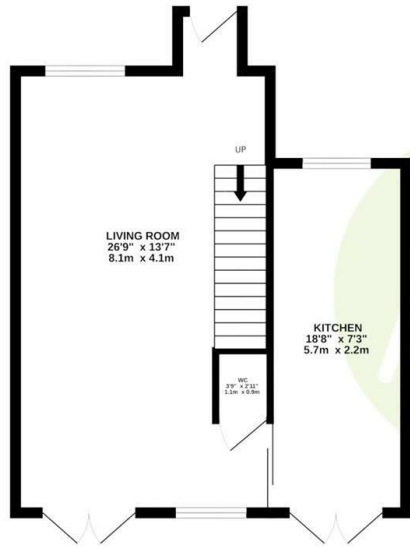


## 21 The Lynch, Hoddesdon, Herts, EN11 8EU

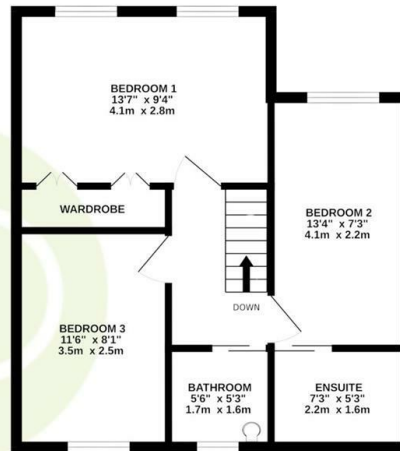
Asking Price £550,000

- Fully refurbished throughout
- Double glazing and gas central heating
- Chain free with vacant possession
- Peaceful lakeside setting
- Excellent access to local amenities, transport links, and outstanding schools
- Bright open-plan lounge and dining area
- Short riverside walk to Broxbourne Station

GROUND FLOOR  
465 sq.ft. (43.2 sq.m.) approx.

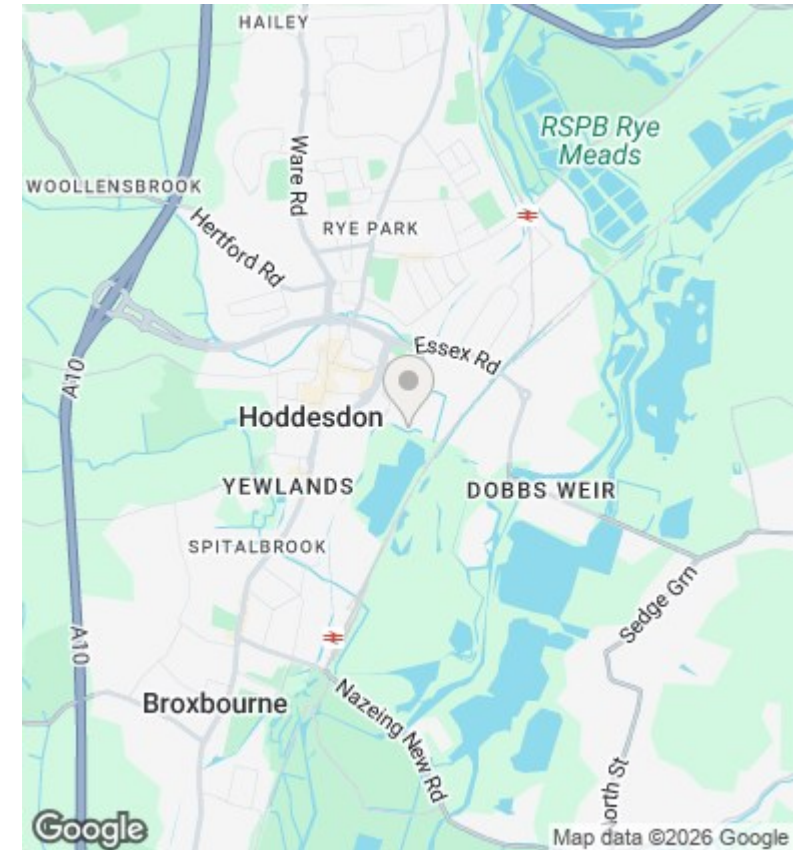


1ST FLOOR  
449 sq.ft. (41.8 sq.m.) approx.



TOTAL FLOOR AREA : 914 sq.ft. (84.9 sq.m.) approx.

Whilst every attempt has been made to ensure the accuracy of the floorplan contained here, measurements of doors, windows, rooms and any other items are approximate and no responsibility is taken for any error, omission or mis-statement. This plan is for illustrative purposes only and should be used as such by any prospective purchaser. The services, systems and appliances shown have not been tested and no guarantee as to their operability or efficiency can be given.  
Made with Metropix ©2025



## Directions

## Viewings

Viewings by arrangement only. Call 01992 470335 to make an appointment.

## Council Tax Band

D

## EPC Rating:

D

Energy Efficiency Rating		Current	Potential
<i>Very energy efficient - lower running costs</i>			
(92 plus) <b>A</b>			
(81-91) <b>B</b>			
(69-80) <b>C</b>			<b>71</b>
(55-68) <b>D</b>	<b>64</b>		
(39-54) <b>E</b>			
(21-38) <b>F</b>			
(1-20) <b>G</b>			
<i>Not energy efficient - higher running costs</i>			
<b>England &amp; Wales</b>		EU Directive 2002/91/EC	